

Limited Resale Opportunity. Be the First in Line.



Your Own Million Dollar Big Five Kruger Park View

Rhino Ridge River Lodge is set high on the edge of the Crocodile River overlooking a visually stunning and really wild Kruger Park floodplain frequented by elephants, buffalo, kudu, impala and their associated predators. The setting of this fabulous new lodge offers what is arguably Mjejane's most expansive panoramic view of the Kruger National Park yet. The view spans from the Berg-en-Dal mountains in the west to beyond Nelmapius's Drift, the old Jock of the Bushveld transport riders' Crocodile River crossing, in the east. To fully appreciate the truth of this statement one has to actually stand on the veranda of this lodge and experience the breathtaking view for yourself.

Fractional Ownership in Rhino Ridge River Lodge is fully subscribed. However, if you would like to own in this or another of Winchester's fractional ownership lodges in Mjejane Game Reserve it

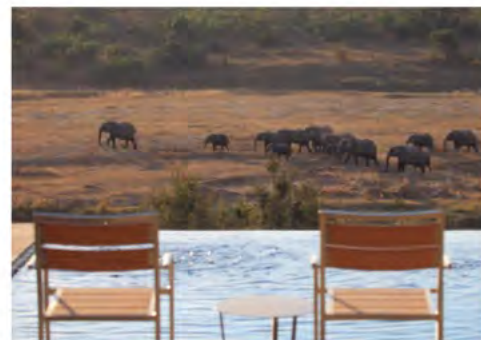
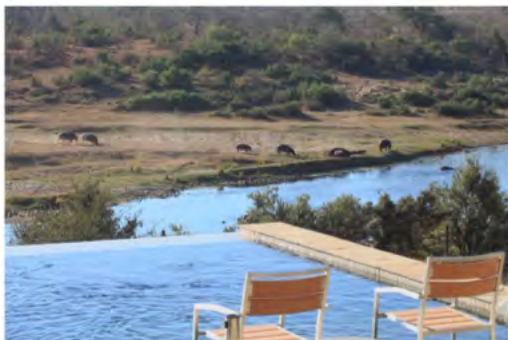
would be best to get your name on the waiting list for a resale by registering your interest with Michael Whiting by calling 082 5515 276.



The architectural style of Rhino Ridge River Lodge can be described as "modern contemporary bush". The sleek lines encompass a clever architectural design affording three of the five *en-suite* bedrooms unparalleled Kruger Park views. The stand alone bush suite enjoys its own view to the Kruger. Numerous patios afford lodge occupants the opportunity of finding a peaceful corner to escape to even when a full complement of guests are in residence.



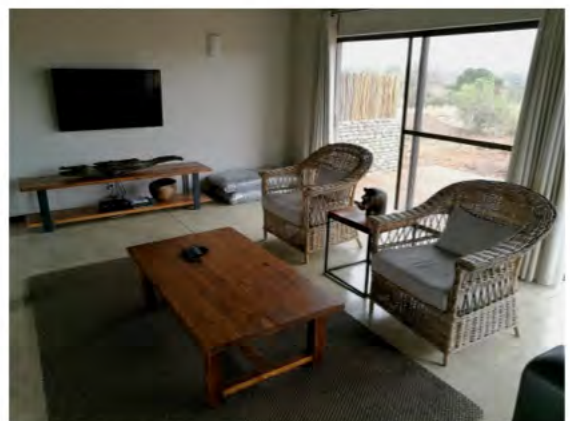
A comfortable tastefully decorated open plan living area opens via frameless stack doors to a deep undercover veranda overlooking an infinity pool and Kruger Park beyond.



The Rhino Ridge dilemma. You might never want to leave the veranda for a game drive just in case you miss out on seeing your wild Kruger neighbours come strolling across the floodplain to visit the river for a drink in your absence. You might even miss a kill! That's Murphy's Bush Law at Rhino Ridge River Lodge. It will be your choice.



An upstairs veranda provides unbelievable vistas over the river and floodplain. From here you literally look passing fish eagles in the eye and have a bird's eye view of hippos in the river below. Enjoy ice cold refreshments from the pub's fridge while peacefully watching the passing parade or the sun setting over the African bush.



The air conditioned T.V./games room with its reversible snooker/ping pong table is the ideal venue for watching your favorite sports events without disturbing those enjoying the serenity of the riverfront. This room opens into the enclosed lawned courtyard on one side and into the bush on the other.



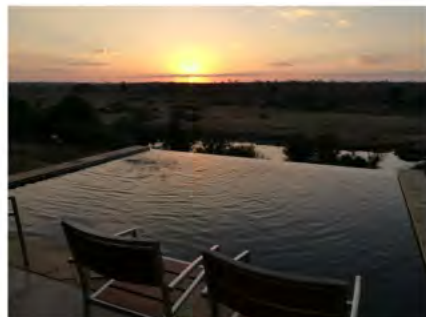
The spacious air conditioned bedrooms are plush and comfortable with *en-suite* bathrooms and outside showers. The private stand-alone bush suite is of the same standard with its own kitchen.



You can hone your culinary bush skills in the fully equipped kitchen, riverside boma or built-in charcoal barbecue on the undercover veranda. Specialised private catering equipment can be stored safely in your own lodge locker.



The Lodge's dedicated FGASA qualified game ranger is on standby to take you on game drives in the lodge's own open safari vehicle. For safety's sake he will explain game drive rules before every departure. You will be able to enjoy great game viewing, birding, tree spotting and sundowners in Big 5 territory. This is, after all, the lifestyle associated with a Rhino Ridge investment. At the end of the day light the fire, put you feet up and enjoy beautiful Lowveld sunsets.





After dark settle back and listen to the nocturnal choruses of the bush. Common contributors are scops and other owls, water thick-knees, a variety of frogs and stridulating insects and honking hippos. From time to time these calls are accompanied by the reverberating roars of lions, whooping of hyenas and perhaps even the rasping grunts of a nearby leopard. One is active in the vicinity of the lodge so do take care after dark. What more could you want to fulfill your African bush dream?

**Be the first in line should an acquisition opportunity arise.
Register your interest in a Resale by calling Mike Whiting
on 082 5515 276 or email michaelwhiting43@gmail.com.**