

HIPPO SANDS RIVER LODGE

MJEJANE GAME RESERVE

FRACTIONAL OWNERSHIP RESALE

A UNIQUE INVESTMENT OPPORTUNITY

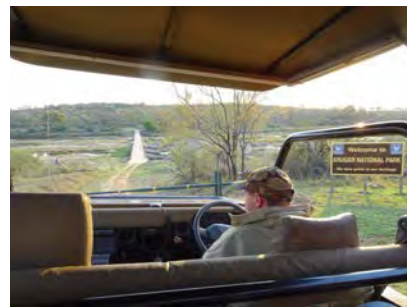
Mjejane Game Reserve is a seamless ecological extension of the acclaimed Biyamiti region of the southern Kruger National Park.



It shares almost 12 kms of spectacularly wild Crocodile River frontage with the Kruger and ever since the dropping of fences back in 2008 the Kruger's Big 5 have made Mjejane their home. Mjejane Game Reserve falls under SANParks's conservation management authority which means that, in terms of the wildlife experience on offer, owning in Mjejane Game Reserve is no different to owning in the Kruger National Park. It is the only Big 5 private game reserve of its kind in the southern region of the Kruger. For Kruger enthusiasts it's a dream come true and a unique inheritance for future generations.



What really makes Mjejane Game Reserve especially unique is its low level bridge which spans the Crocodile River and links Mjejane directly into the Kruger Park's road network.



This private bridge is for the exclusive conditional use of Mjejane owners only and is the first of its kind in the history of the Kruger National Park.

All riverfront stands in Mjejane Game Reserve were sold out in 2015 which means that the only way to acquire an investment in the highly sought after riverine ecozone is via resales which are few and far between.

Hippo Sands River Lodge.

Hippo Sands is an exclusive shared ownership lodge overlooking a magnificent stretch of the Crocodile River permanently inhabited by many hippos and crocodiles.



Many large game trails converge on the river bank opposite the lodge. They are indicative of hundreds of years of intense big game (elephant, buffalo, rhino, hippo and a variety of antelope) traffic to and from the river. Consequently predator activity is also high along this stretch of the river.



Lion and leopard have been seen from the lodge on numerous occasions and kills have also been observed.



Almost opposite the lodge on the Kruger side of the river is a large seasonal sandbank which is used by elephant, hippo, buffalo and rhino as a favored resting and drinking spot on water's edge.



This sandbank also serves as the preferred point of departure for buffalo and elephants crossing the river between the Kruger and Mjejane.

A number of large crocodiles patrol this stretch of the river and have been seen to take young buffalo and other game from time to time.



Because this lodge is on the very edge of Big 5 territory you might even find a lion sleeping in the boma! So keep your eyes peeled.



Game viewing from Hippo Sands can be so good that you may not want to move off the veranda during your stay. This is surely the ultimate in relaxed wildlife viewing while going wild in style.

Lodge facilities

The lodge is entered from an undercover thatched porte cochere into a spacious open plan lounge, dining room and kitchen area.



The lodge is air-conditioned throughout and has been furnished and decorated with carefully selected upmarket pieces and artifacts



The kitchen is fully equipped with Smeg stove, microwave oven and more than adequate fridge and freezer space for a full complement of occupants. The kitchen is equipped with a washing machine, tumble drier, dishwasher and a chest freezer for ice.

The lounge opens via stack-doors onto an undercover outdoor living area with built- in barbecue, comfortable seating and a dining table for al fresco meals.



A walkway leads from this patio to a boma with a firepit/braai. A rim-flow swimming pool with in-pool martini seat overlooks the Crocodile River and Kruger National Park.



Hippo Sands provides accommodation for up to 10 occupants in 5 air-conditioned bedrooms (all beds under mosquito nets) with *en-suite* bathrooms. Two bathrooms have both baths and showers and three have showers only. All bedrooms open onto undercover patios.

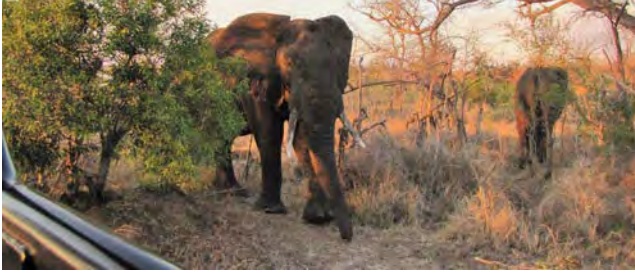


A separate loft room with DSTV opens onto an upstairs deck overlooking the Crocodile River.



The upstairs deck is ideal for enjoying sundowners while experiencing magnificent sunsets over the Crocodile River and adjoining Kruger Park bush. The views from the lodge are spectacular and opportunities for viewing game and birds from the lodge itself are excellent.

Hippo Sands River Lodge is under the day to day supervision of a FGASA accredited game ranger who resides in an on-site self-contained ranger chalet.



The ranger is available for taking lodge occupants on game drives in the lodge's own Open Safari Vehicle through Kruger Big 5 territory.

The lodge is serviced daily from Monday to Saturday (Sunday servicing is an optional extra) which means that you can truly put your feet up and unwind in style.



If Hippo Sands River Lodge ticks all the boxes for your ideal Kruger Park bush retreat then call Mike Whiting for further details on +27825515276 or email michaelwhiting43@gmail.com